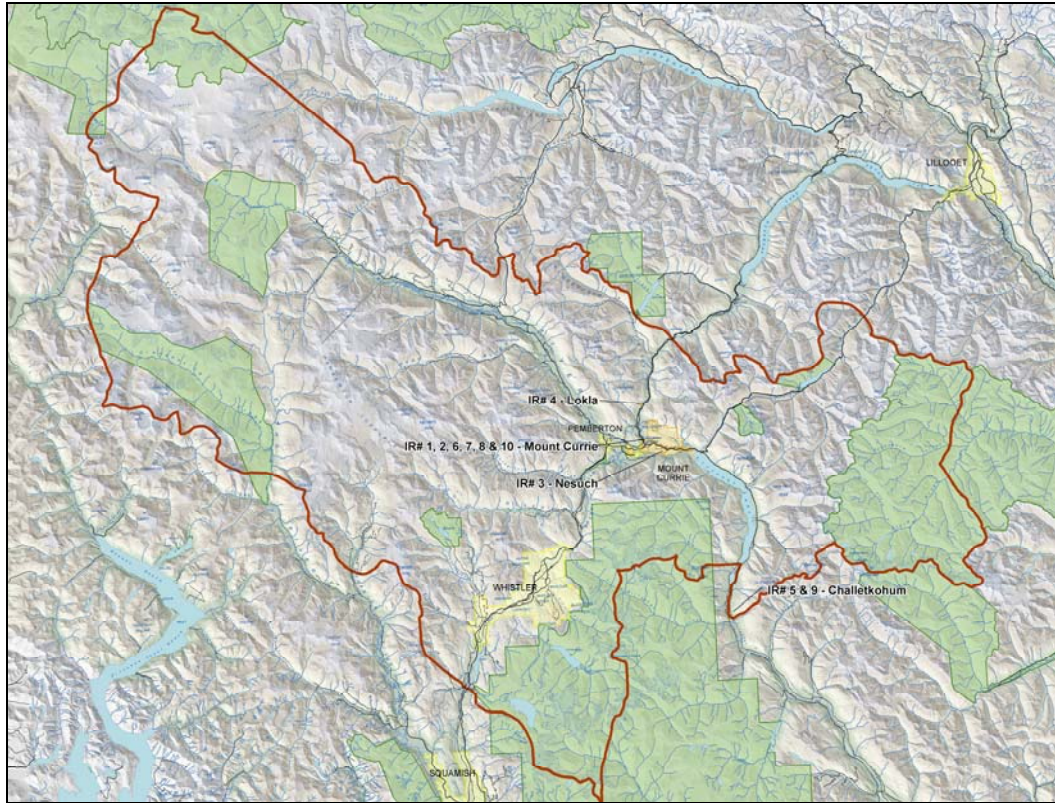




Lil'wat Nation Fact Sheet



Area Statistics

Size of the Lil'wat Traditional Territory		797,000 Ha
Number of Reserves within the Territory		10
Size of Each Reserve	IR 6 – Xit'olacw	1650 Ha
	IR 3 - Nesuch	417 Ha
	IR 8 – Mount Currie	327 Ha
	IR 7 – Mount Currie	129 Ha
	IR 1 – Mount Currie	79 Ha
	IR 2 – Mount Currie	62 Ha
	IR 10 – Mount Currie	29 Ha
	IR 4 – Lokla	7 Ha
	IR 9 - Challetkohum	2 Ha
	IR 5 - Challetkohum	1 Ha
Total Reserve Area		2713 Ha



Population Statistics (as of Dec 31, 2007)

Age	On Reserve				Off Reserve	Total Band Members
	Band Members	Other Band	Non-Status	Total	Band Members	
0	10	1	16	27	4	14
1-4	89	11	8	108	26	115
5-19	388	36	11	435	150	538
20-64	169	85	33	887	420	1189
65+	57	1	1	59	23	80
Total	1313	134	69	1516	623	1936

Other Info

Distance from IR #6 (Xit'olacw) to Pemberton:	<ul style="list-style-type: none"> • 16 km
Distance from Mount Currie to Vancouver:	<ul style="list-style-type: none"> • 165 km
Comparative size of the Territory:	<ul style="list-style-type: none"> • ¼ the size of Vancouver Island
Nations with Overlapping Territories:	<ul style="list-style-type: none"> • Squamish, In-SHUCK-ch, N'quatqua, Klahoose, Hamatla Treaty Society, Tsleil-Waututh, Sto:lo, Esketemc
Overlapping Municipal, Provincial and Federal Government Agencies:	<ul style="list-style-type: none"> • Squamish Lillooet Regional District (SLRD) • Village of Pemberton; Resort Municipality of Whistler; Municipality of Squamish • Squamish Forest District; Cascades Forest District; Sunshine Coast Forest District; Chilliwack Forest District