



Mount Currie Band - Lil'wat Nation Strategic Plan

Lil'wat Vision

Lil'wat7ul will be governed under our own constitution. T'akmin will be applied to new challenges and opportunities to maximize the benefit for all the community. We will contribute as individuals and families to a healthy community that ensures our safety and security.

Lil'wat Values

- Respect
- Honesty
- Responsibility
- Integrity
- Fairness
- Living our way of life
- Ucwalmicw Tmicw (the people – the land)
- T'akmin (our way)
- K'ul'tsam' (take what you need)

Note:

Chief and Council have developed this strategic plan with input from the community. They will work to implement this plan over their term in office. Throughout their term in office they will also honour the Council Code:

We are the elected governing body of Lil'wat7ul. As accountable leaders we work to be informed and to make decisions to the best of our abilities. We listen respectfully to the people, value their input and keep them informed. We will be financially responsible and maximize resources to benefit the community.

Kukstumckacw

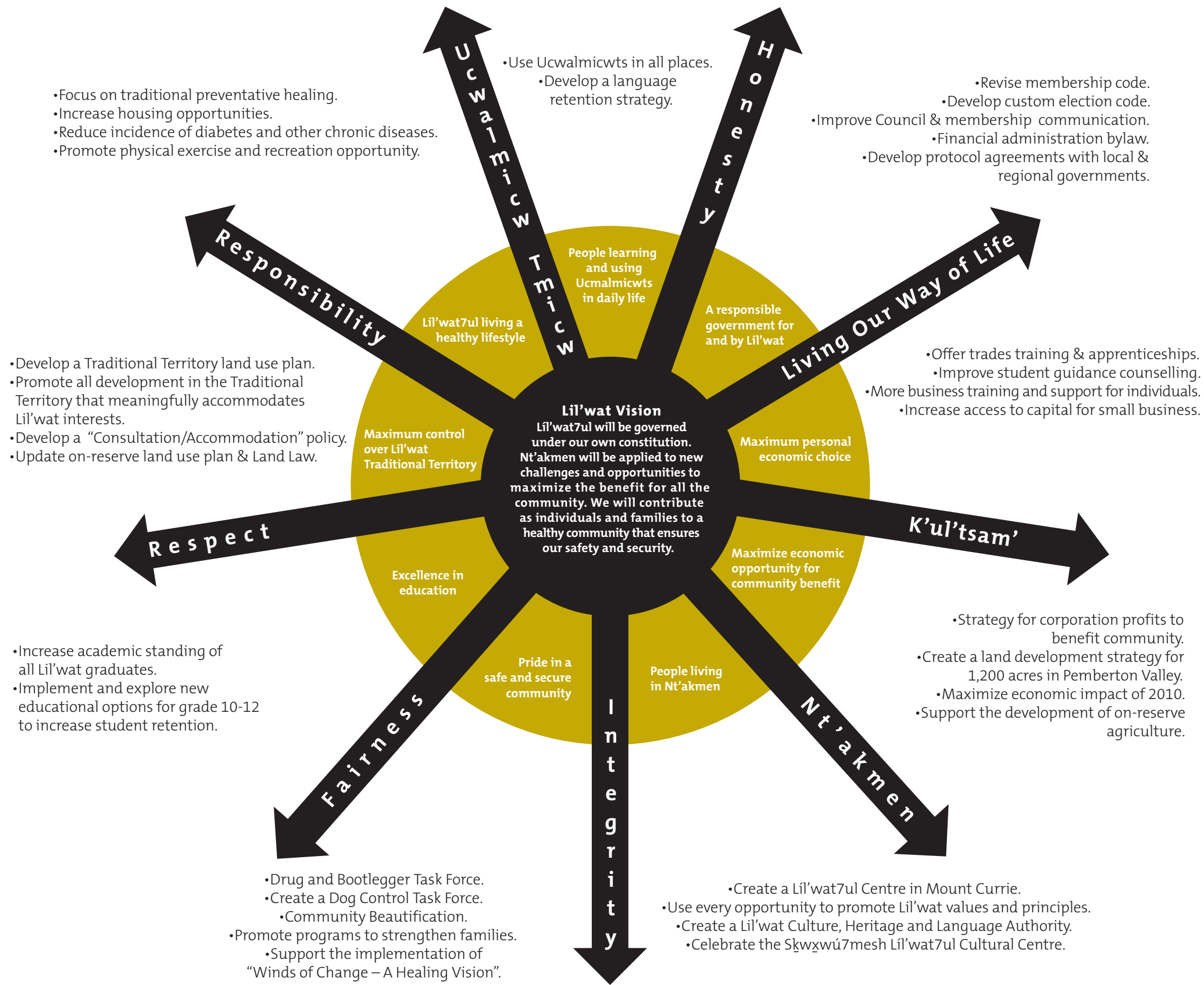


Goals and Priorities

Goals (3 to 5 years)	Strategic Priorities (2 years)
A responsible government for and by Lil'wat	<ul style="list-style-type: none"> • Revise membership code. • Develop custom election code. • Improve Council and Membership communication by: <ul style="list-style-type: none"> Monthly newsletter Quarterly General Assembly (1 in Vancouver) New website Distribute Lil'wat Strategic Plan to Membership More workshop style forums More department information sharing workshops to community “Suggestion Box” at General Assembly Follow up reports (NEW) Respond to every signed letter from community members sent to Council in timely fashion. Communication training for Councilors. • Build a new Lil'wat7ul center (governance/business/culture complex) • Eliminate the accumulated deficit and bring to referendum a financial administration bylaw. • Develop protocol agreements with local and regional governments – including SCC
Maximum control over Lil'wat Traditional Territory	<ul style="list-style-type: none"> • Develop a Traditional Territory land use plan. • Promote all development in the Traditional Territory that does meaningfully accommodate Lil'wat interests. • Develop a “Consultation/Accommodation” policy. • Update on-reserve land use plan & Land Law.
People living “T'akmin”	<ul style="list-style-type: none"> • Build a Lil'wat7ul Centre in Mount Currie. (Governance/Business/Culture Complex) • Use every opportunity to promote Lil'wat values and principles through prayers, smudge, sweats, ceremony and celebrating life cycles. • Create a Lil'wat Culture, Heritage and Language Authority to provide leadership on questions of language and culture. • Celebrate the Skwxwu7mesh/Lil'wat7ul Cultural Centre
People learning and using Ucwalmicwts in daily life	<ul style="list-style-type: none"> • Use Ucwalmicwts in all places through: names, signage for buildings and roads, maps. • Develop a language retention strategy.
Lil'wat7ul	<ul style="list-style-type: none"> • Focus on traditional preventative healing.



<p>living a healthy lifestyle</p>	<ul style="list-style-type: none"> • Increase housing opportunities. • Reduce incidence of diabetes and other chronic diseases. • Promote physical exercise and recreation opportunity by supporting the Recreation Committee; implementing the 2010 Sports Legacy; developing a renewal strategy for the gym and old hall.
<p>Pride in a safe and secure community</p>	<ul style="list-style-type: none"> • Drug and Bootlegger Task Force (Lil'wat Wellness Plan) • Create a Dog Control Task Force (Lil'wat Wellness Plan) • Community Beautification – clean up/sign flags/Mt Currie entrance sign/Main St. upgrade/sidewalks on roads/house numbers • Promote programs to strengthen families. • Support the implementation of “Winds of Change – A Healing Vision”
<p>Maximum personal economic choice</p>	<ul style="list-style-type: none"> • Offer trades training, apprenticeships and promote trades to youth • Improve student guidance counselling (goal setting, career planning, mentorship, coop) • Increase # of people in employment based training programs. • More business training and support for individuals • Increase access to capital for small business
<p>Maximize economic opportunity for community benefit.</p>	<ul style="list-style-type: none"> • Develop a strategy for corporation profits to benefit community (reinvestment/diversification/dividends) • Create a land development strategy for 1,200 acres in Pemberton Valley. • Maximize economic impact of 2010. • Support the development of on-reserve agricultural production.
<p>Excellence in education.</p>	<ul style="list-style-type: none"> • Increase academic standing of all Lil'wat graduates • Implement and explore new educational options grade 10-12 to increase student retention



Lil'wat Nation Strategic Plan 2005 - 2010

